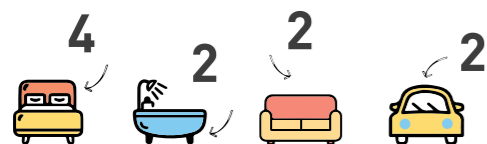


FLINDERS 235

Designed with three distinct zones including a parents' retreat, kids wing and an open plan kitchen/ living area, the Flinders 235 is ideal for a busy family.

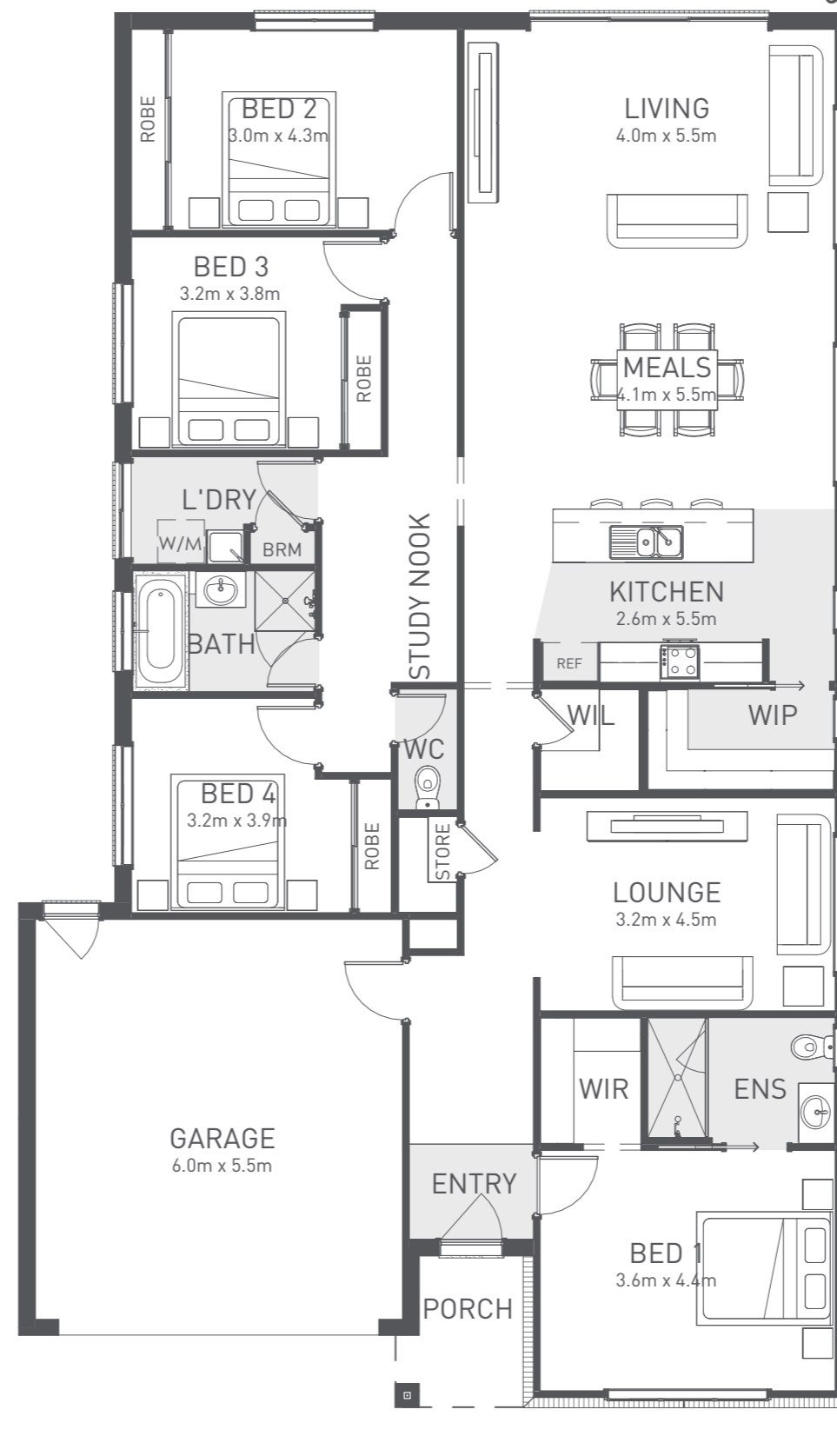
The open plan kitchen and living allows the natural light to filter into the central hub of the home. The kitchen features all the modern appliances, including a well thought out walk-in pantry, helping to keep the kitchen clutter free. This design also includes a study nook which is perfect for working from home. It's hard not to fall in love with the design and lifestyle that the Flinders 235 offers.



	m ²	Sq
Residence	194.6	21.0
Garage	36.4	3.9
Porch	3.9	0.4
Home size	234.9	25.3

ideal for entertaining

20.9 m



12.5 m

TO FIT
LOT WIDTH
14m

MINIMUM LOT DEPTH 28m



© Copyright Geelong Homes
Some images are artistic impressions and are indicative only. While best endeavours have been used to provide information in this publication that is true and accurate. Geelong Homes and related entities accepts no responsibility and disclaim all liability to any errors or inaccuracies it may contain. Prospective purchasers should make their own inquiries to verify the information contained herein. Standard floor plan & inclusions shown. Minimum block size is subject to developer requirements.

Floor Plan 1:100

geelonghomes.com.au
P 03 5222 5522