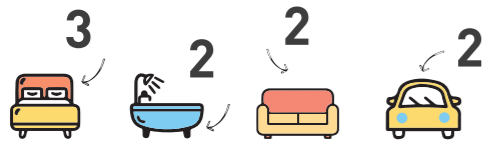


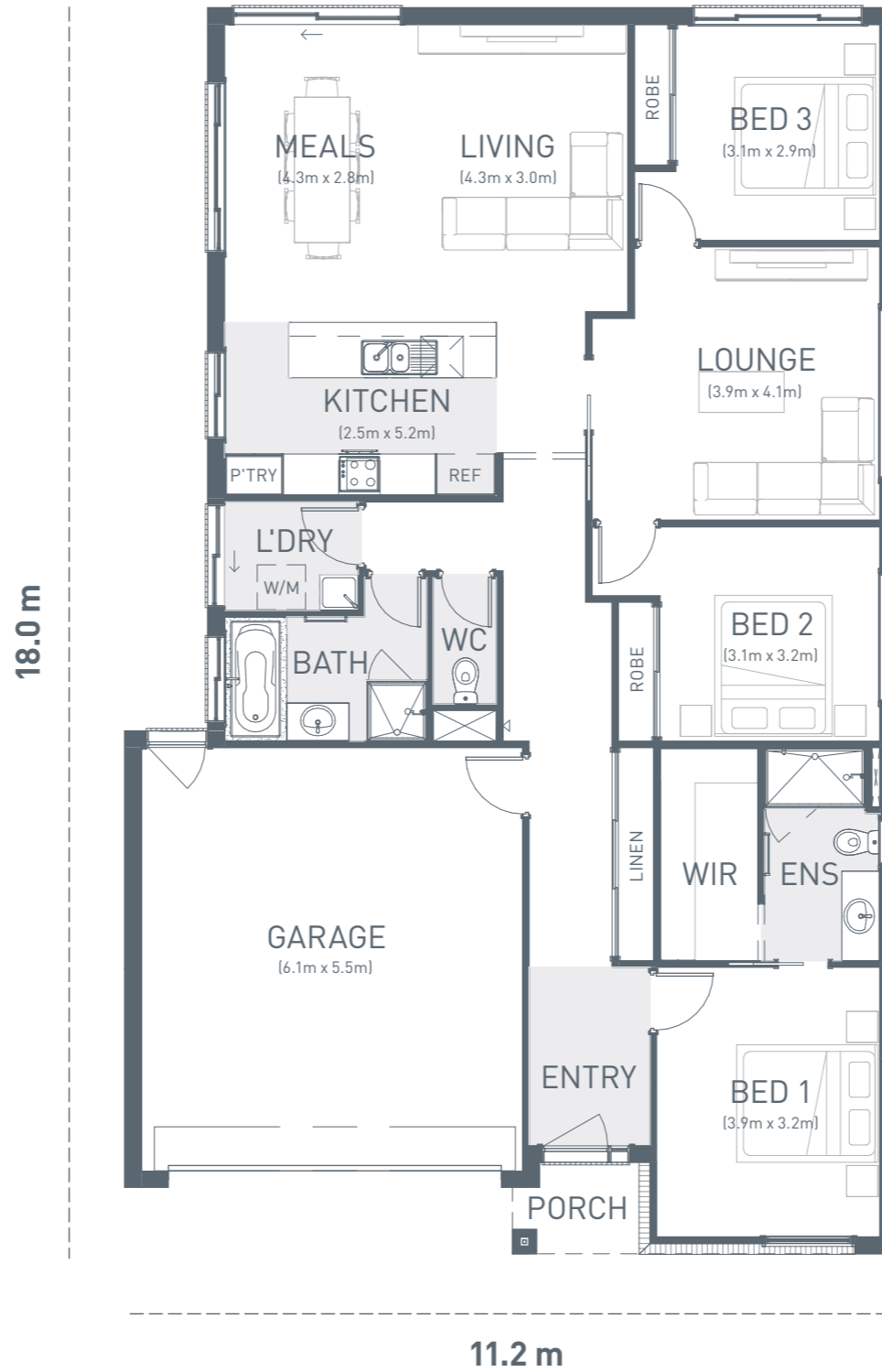
# OAKWOOD 183

If you are looking for a home that maximises the use of space the Oakwood 183 design is ideal for you.

The master bedroom including ensuite and generous walk-in robe is located at the front of the home. Two additional double bedrooms including generous robes and lounge are positioned in their own private wing, at the rear of the home. With large open plan living and generous kitchen, complete with an island bench, everyone has ample room to feel comfortable in this home.



	m <sup>2</sup>	Sq
Residence	142.5	15.3
Garage	37.8	4.1
Porch	2.3	0.2
<b>Home size</b>	<b>182.6</b>	<b>19.6</b>



TO FIT LOT WIDTH  
**12.5m**

MINIMUM LOT DEPTH 25m

Floor Plan 1:100



© Copyright Geelong Homes  
Some images are artistic impressions and are indicative only. While best endeavours have been used to provide information in this publication that is true and accurate, Geelong Homes and related entities accepts no responsibility and disclaim all liability to any errors or inaccuracies it may contain. Prospective purchasers should make their own inquiries to verify the information contained herein. Standard floor plan & inclusions shown. Minimum block size is subject to developer requirements.