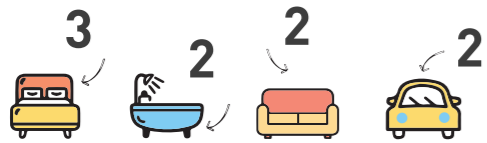


# RIVERSIDE 221

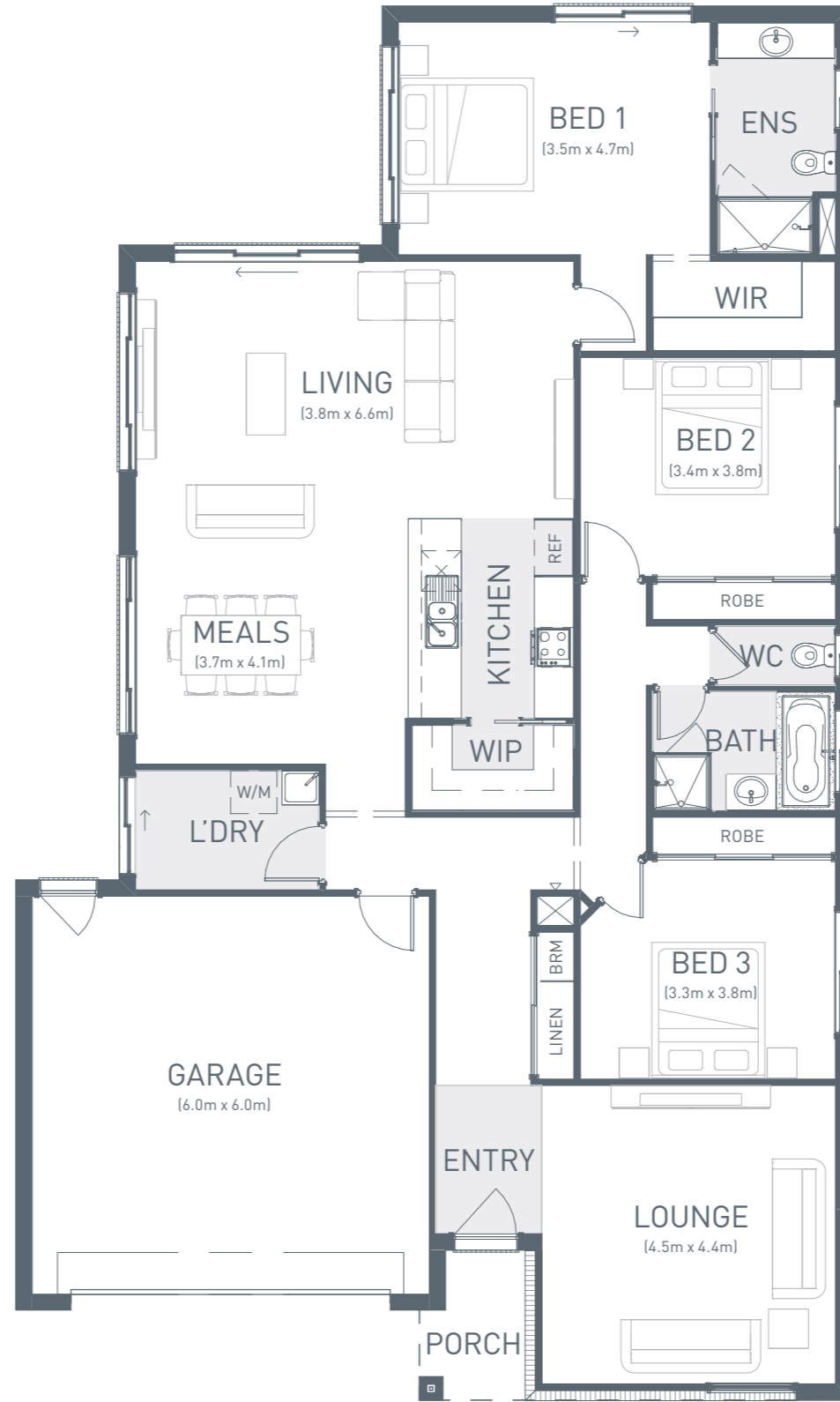
Everyone will have room to move, play or relax in the Riverside 221.

This spacious family home includes three large bedrooms with the master bedroom located at the rear of the home, featuring sliding doors to the backyard. With a large walk-in robe and generous sized shower in the ensuite, you will love the secluded wing of this home. Riverside 221 has been designed for entertaining with sliding doors opening out to the backyard from the open plan living area. Featuring two separate living spaces and a kitchen with generous walk-in pantry, this home is sure to impress.



	m <sup>2</sup>	Sq
Residence	177.6	19.1
Garage	40.3	4.3
Porch	3.3	0.3
<b>Home size</b>	<b>221.2</b>	<b>23.7</b>

21.0 m



12.6 m

TO FIT  
LOT WIDTH  
**14m**

MINIMUM LOT DEPTH 28m

Floor Plan 1:100



© Copyright Geelong Homes  
Some images are artistic impressions and are indicative only. While best endeavours have been used to provide information in this publication that is true and accurate, Geelong Homes and related entities accepts no responsibility and disclaim all liability to any errors or inaccuracies it may contain. Prospective purchasers should make their own inquiries to verify the information contained herein. Standard floor plan & inclusions shown. Minimum block size is subject to developer requirements.