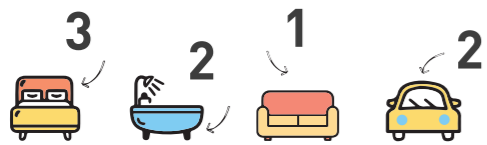


# MINERVA 169

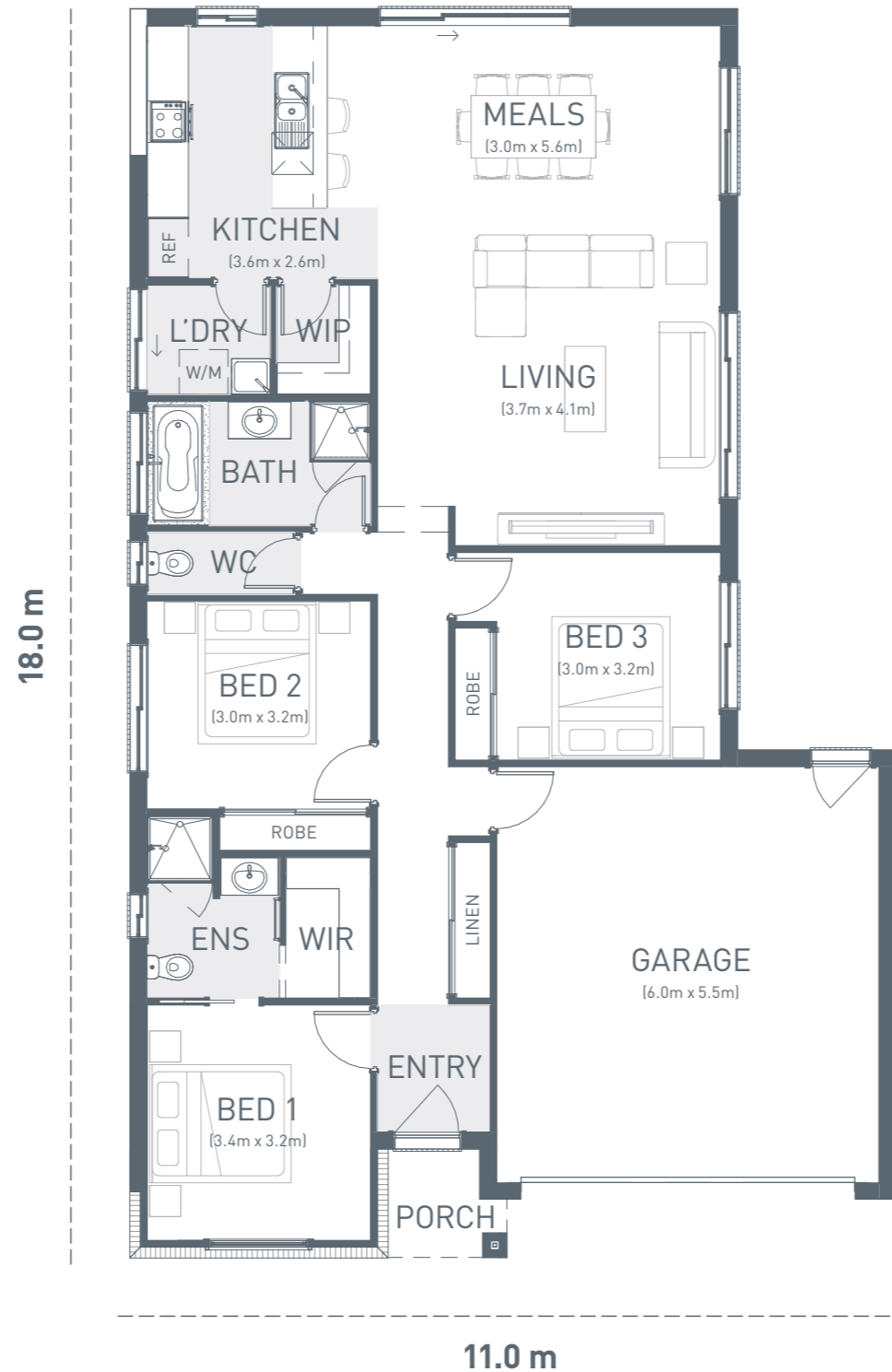
The Minerva 169 is a functional three bedroom home with lots of charm.

The open plan living and kitchen is the heart of the home where everyone will come together. This home offers plenty of storage, including walk-in pantry to the kitchen and a generous linen cupboard to the entry. This is the perfect home for investors, first home buyers and young families.



	m <sup>2</sup>	Sq
Residence	130.1	14.0
Garage	36.9	4.0
Porch	2.4	0.3
<b>Home size</b>	<b>169.4</b>	<b>18.3</b>

functional kitchen



TO FIT  
LOT WIDTH  
**12.5m**

MINIMUM LOT DEPTH 25m



© Copyright Geelong Homes  
Some images are artistic impressions and are indicative only. While best endeavours have been used to provide information in this publication that is true and accurate, Geelong Homes and related entities accepts no responsibility and disclaim all liability to any errors or inaccuracies it may contain. Prospective purchasers should make their own inquiries to verify the information contained herein. Standard floor plan & inclusions shown. Minimum block size is subject to developer requirements.