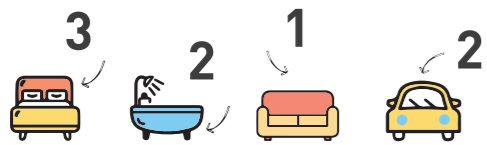


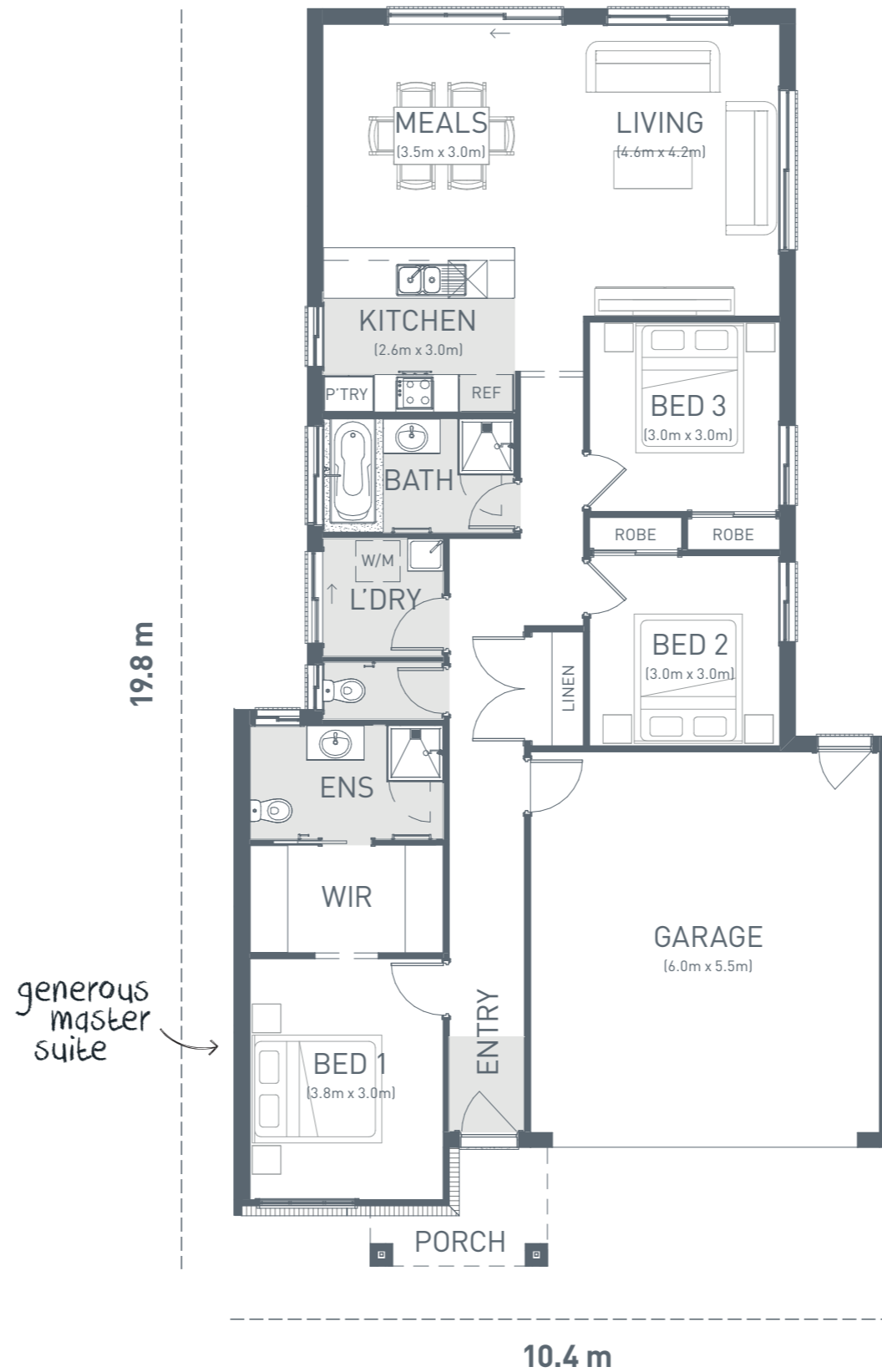
MONTEREY 164

The Monterey 164 is the perfect home for first home buyers entering the property market or investors.

Fitting neatly on to a 10.5m width block, this home offers three double bedrooms, including the master with a generous walk-in robe and ensuite. This home is a great choice at an affordable price.



	m ²	Sq
Residence	123.4	13.3
Garage	36.5	3.9
Porch	3.7	0.4
Home size	163.6	17.6



TO FIT
LOT WIDTH
10.5m

MINIMUM LOT DEPTH 28m



© Copyright Geelong Homes
Some images are artistic impressions and are indicative only. While best endeavours have been used to provide information in this publication that is true and accurate, Geelong Homes and related entities accept no responsibility and disclaim all liability to any errors or inaccuracies it may contain. Prospective purchasers should make their own inquiries to verify the information contained herein. Standard floor plan & inclusions shown. Minimum block size is subject to developer requirements.