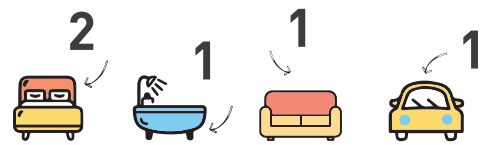


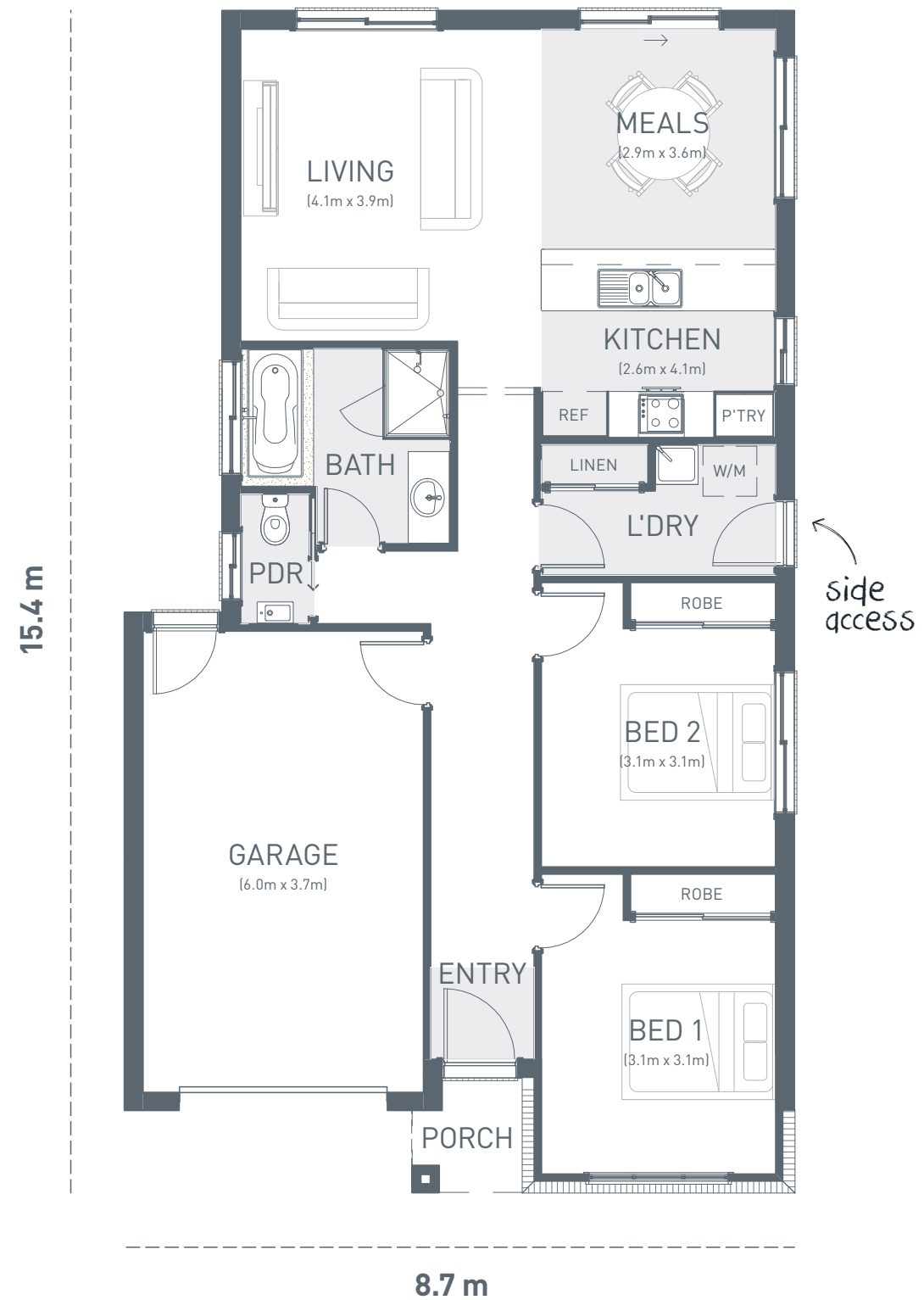
# YARRA 119

The Yarra 119 is a compact home that makes the most of every inch of space.

Designed for small blocks, the Yarra 119 makes an ideal choice for first home buyers and downsizers. Featuring an open plan living area that is light and bright and opens out to the backyard, two bedrooms each with robes, a bathroom with a generous shower and storage in the laundry, this design will be a comfortable choice for people looking for a compact home.



	m <sup>2</sup>	Sq
Residence	93.2	10.0
Garage	24.5	2.4
Porch	1.9	0.2
<b>Home size</b>	<b>119.6</b>	<b>12.6</b>



TO FIT  
LOT WIDTH  
**10m**

MINIMUM LOT DEPTH 23m



© Copyright Geelong Homes  
Some images are artistic impressions and are indicative only. While best endeavours have been used to provide information in this publication that is true and accurate, Geelong Homes and related entities accepts no responsibility and disclaim all liability to any errors or inaccuracies it may contain. Prospective purchasers should make their own inquiries to verify the information contained herein. Standard floor plan & inclusions shown. Minimum block size is subject to developer requirements.