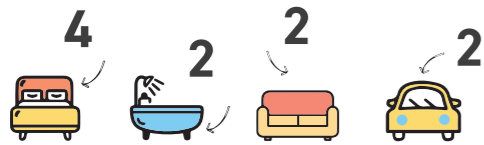


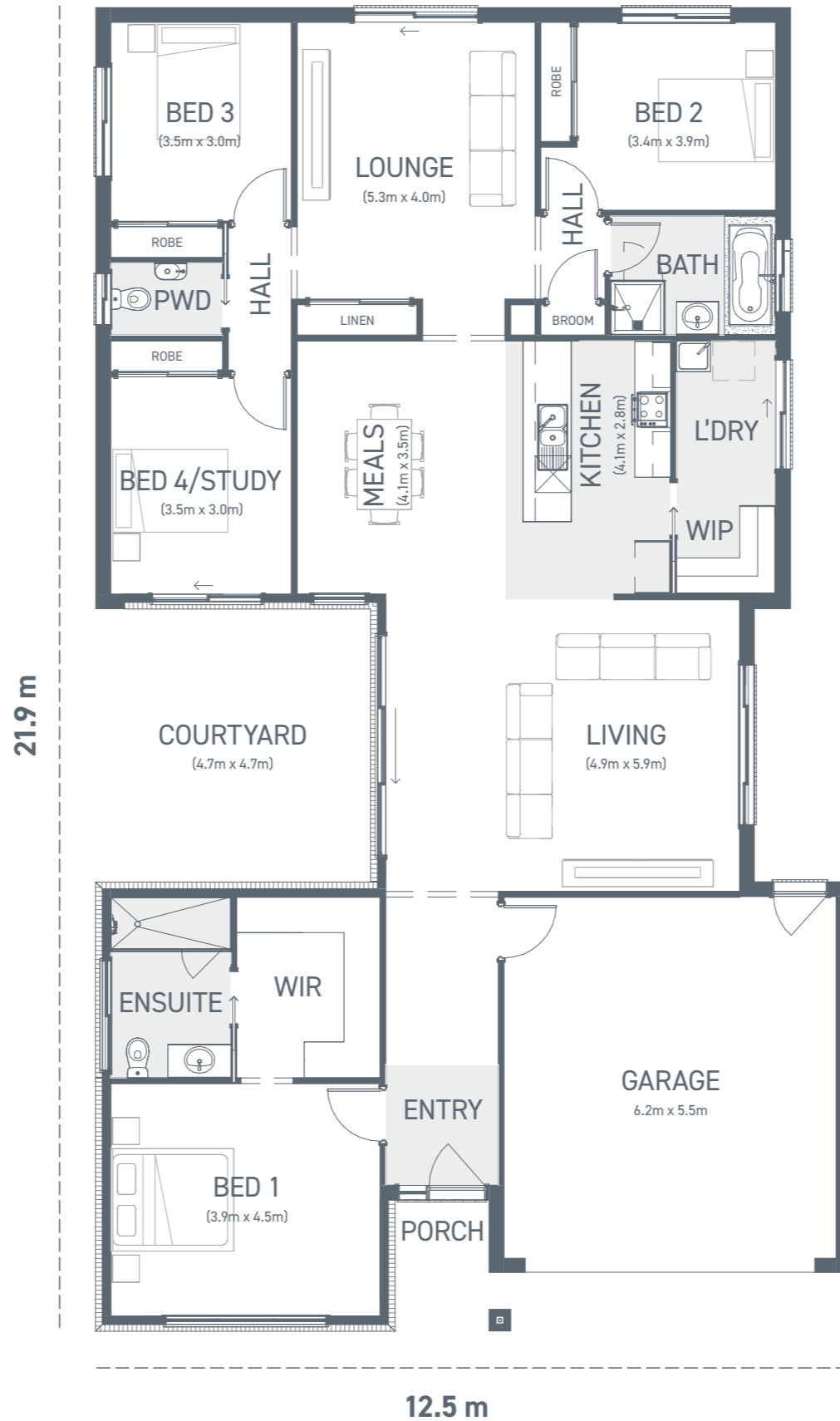
KENSINGTON 230

The Kensington 230 is designed for modern families with a focus on both privacy and communal living.

With its central courtyard, this floorplan will suit blocks with any aspect and it will be light-filled and well-connected to the outdoors. As you enter the Kensington 230, the master bedroom is situated at the front, which offers privacy from the other rooms. The master bedroom includes an ensuite with a large shower, and a walk-in robe with ample storage space. The central courtyard brings a sense of light and space to the living, meals, and kitchen areas. The kitchen features a walk-in pantry that connects directly to the laundry which opens out to the side of the home. The rear of the home is a dedicated kids' wing, with three additional bedrooms and a large living room for them to enjoy. The kids' wing also includes a bathroom and a separate powder room. Everyone will feel "Good to be Home" in the Kensington 230.



	m ²	Sq
Residence	190.3	20.5
Garage	36.4	3.9
Porch	3.4	0.4
Home size	230.1	24.8



TO FIT
LOT WIDTH
14m

MINIMUM LOT DEPTH 28m

Floor Plan 1:100



© Copyright Geelong Homes
Some images are artistic impressions and are indicative only. While best endeavours have been used to provide information in this publication that is true and accurate, Geelong Homes and related entities accepts no responsibility and disclaim all liability to any errors or inaccuracies it may contain. Prospective purchasers should make their own inquiries to verify the information contained herein. Standard floor plan & inclusions shown. Minimum block size is subject to developer requirements.