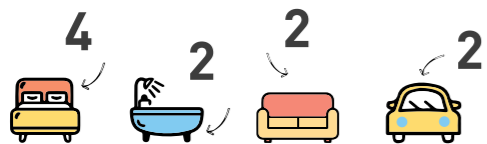


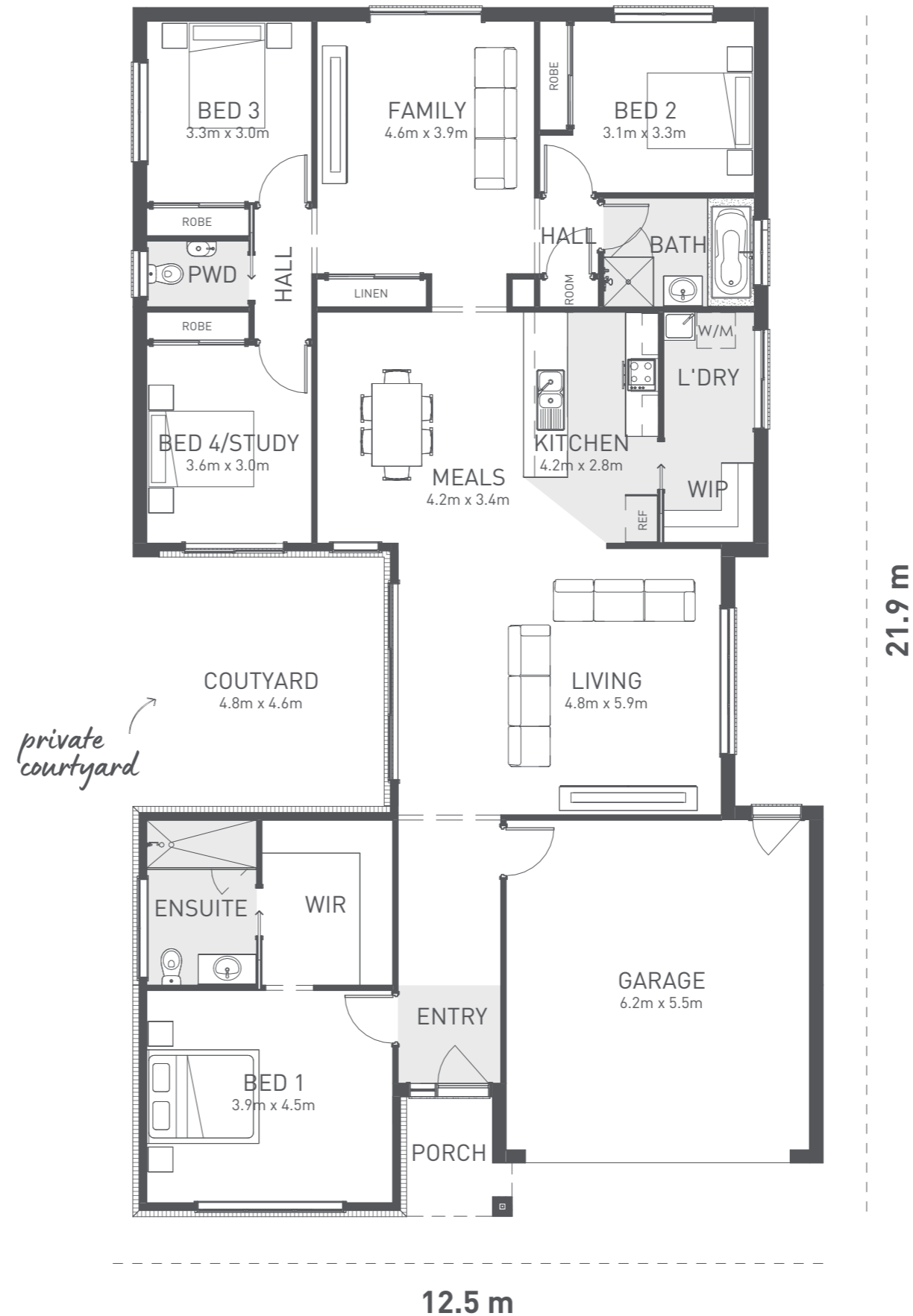
KENSINGTON 230

The Kensington 230 is a modern courtyard home made for easy family living.

The Kensington 230 makes the most of any block thanks to its light filled central courtyard. The main bedroom sits privately at the front with an ensuite and generous walkin robe. The central courtyard opens into the kitchen, meals, and living area, with a walkin pantry that flows through to the laundry. A dedicated kids' wing at the rear includes three bedrooms, a large living room, a bathroom, and a powder room. Everyone will feel "Good to be Home" in the Kensington 230.



	m ²	Sq
Residence	190.3	20.5
Garage	36.4	3.9
Porch	3.4	0.4
Home size	230.1	24.8



TO FIT
LOT WIDTH
14m

MINIMUM LOT DEPTH 38m

21.9 m

12.5 m



© Copyright Geelong Homes
Some images are artistic impressions and are indicative only. While best endeavours have been used to provide information in this publication that is true and accurate. Geelong Homes and related entities accepts no responsibility and disclaim all liability to any errors or inaccuracies it may contain. Prospective purchasers should make their own inquiries to verify the information contained herein. Standard floor plan & inclusions shown. Minimum block size is subject to developer requirements.