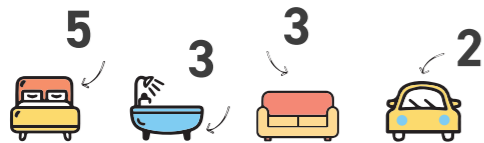


# LATROBE 337

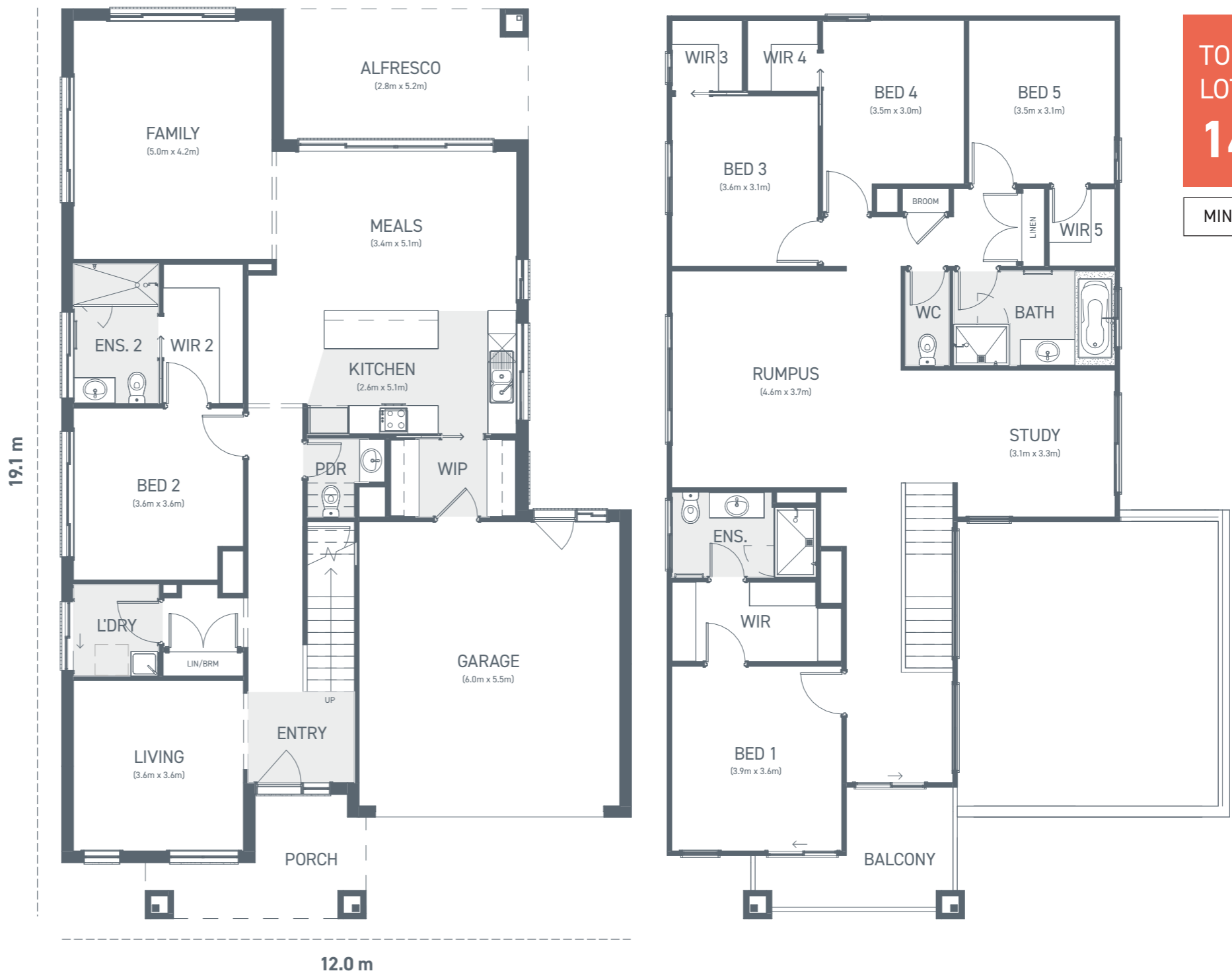
The Latrobe 337 is the perfect home for multi-generational living or a holiday getaway.

This spacious five-bedroom design offers convenience and comfort. The double garage seamlessly connects to the walk-in pantry and kitchen, simplifying your daily routine. The kitchen boasts ample preparation space with a generous island bench and a walk-in pantry. The ground floor also features a guest bedroom with ensuite and walk-in robe, a separate living plus a family room. Upstairs, features four more bedrooms, all with walk-in robes. The master bedroom includes its own ensuite. A rumpus and study complete this zone of the home.

It's good to be home at the Latrobe 337, designed for modern living.



	m <sup>2</sup>	Sq
Ground floor	132.9	14.3
First floor	136.5	14.7
Garage	37.2	4.0
Alfresco	14.2	1.5
Balcony	8.8	0.9
Porch	7.1	0.7
<b>Home size</b>	<b>336.7</b>	<b>36.1</b>



TO FIT  
LOT WIDTH  
**14m**  
MINIMUM LOT DEPTH 26.5m



© Copyright Geelong Homes  
Some images are artistic impressions and are indicative only. While best endeavours have been used to provide information in this publication that is true and accurate, Geelong Homes and related entities accepts no responsibility and disclaim all liability to any errors or inaccuracies it may contain. Prospective purchasers should make their own inquiries to verify the information contained herein. Standard floor plan & inclusions shown. Minimum block size is subject to developer requirements.